



Bassingbourn

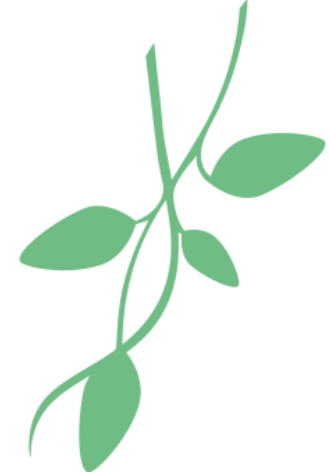
Community Primary School

**Welcome to
Year 6**

Meet the Team

Whiteread

Wiltshire



Mr Bryant

Mr Grey

Mr Witchell

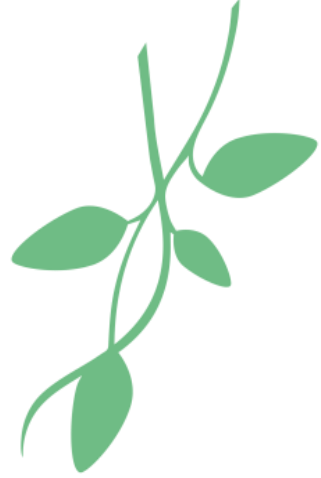
Mrs Barnett



Bassingbourn
Community Primary School

Agenda

- Behaviour Expectations
- Curriculum
- Homework
- Spellings
- PE/Uniform
- Y6 SATs
- Assessments
- Enrichment Opportunities
- Attendance Matters
- SEND Support
- Questions/Parent Helpers



Behaviour Expectations

- House points
- Head Teacher Award
- Celebration Assembly
- 3 reminders
- Restorative conversations
- Involving parents
- The Nook



Behaviour Expectations



Be safe

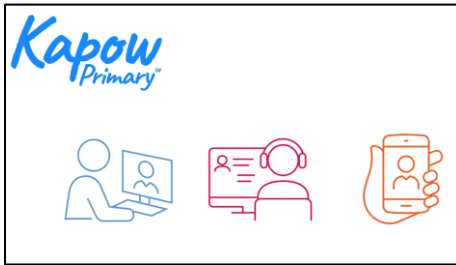
Be respectful



Bassingbourn
Community Primary School

Curriculum

We are in the process of developing our wider curriculum this year.



Our humanities topics include:

- Autumn: WW II
- Spring: Ancient Egyptians
- Summer: Early Settlers



Homework

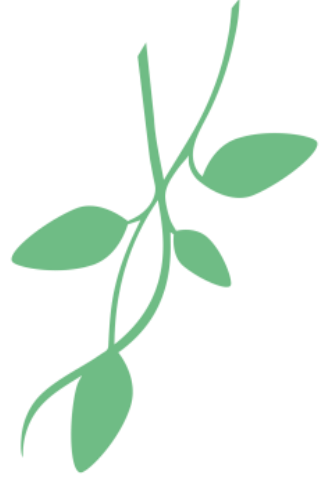
In Year 6, we will be sending weekly spelling, arithmetic and handwriting practice home.

On alternate weeks, we will also be sending comprehension and SPAG work to complete home.

This will be sent home each Friday, for the children to return the following Thursday.

We would also like the children to use Times Tables Rockstars to ensure they have a firm knowledge of their times tables.

Finally, we would expect the children to read for a minimum of 15 minutes every day.



Spellings – Y5/6 Statutory List

In addition to the weekly spelling lists, we would like the children to build their knowledge of the Y5/6 statutory spelling list.



The Y3/4 spelling list should also be practised if these still pose a challenge to your child.

Dictations are a way to practise writing spelling words in a whole sentence and are used regularly within school – they are a great way to learn at home too. We encourage you to make them as silly as possible to engage your children!



PE and Uniform

Friday afternoons

- Children should arrive at school in their school uniform and then get changed into their PE kit at lunch time.
- School logo t-shirt or in colder months **plain** navy or black tracksuit tops or jumpers.
- White socks and plain, black trainers for outdoor PE.
- Hair should be tied back, **earrings taken out**, nails short.
- When piercing ears, please wait until the holidays as the children will not be able to take part in lessons until they can remove their earrings independently.
- No Smart watches – or watches that can receive messages/access the internet to be worn at any time.



Y6 SATs



During the week beginning the 12th May, children will undertake their statutory end of KS2 tests.

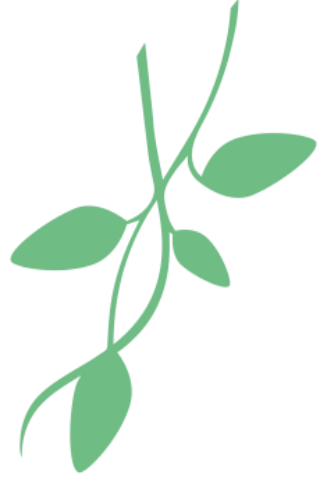


Bassingbourn
Community Primary School

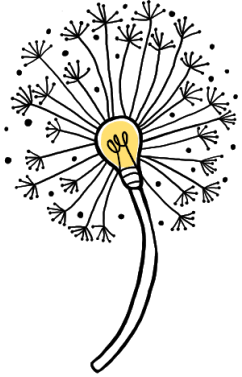
Assessments

In Year 6, we complete past SATs assessments half termly. These cover a range of multiple choice and short answer questions.

This allows teachers to conduct gap analysis and ensure that children are fully prepared in all concepts which may arise.



Enrichment Opportunities

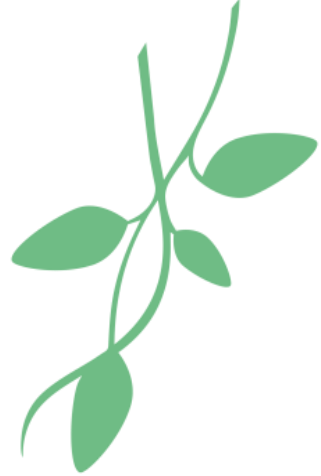


We believe learning beyond the classroom are extremely important.

These can be visits, workshops and whole school themed days.

A letter went home at the end of year 5 in regards to our PGL residential (after SATs)

We are in the process of finalising these for the year.



Attendance Matters



A calendar year has 365 days; a school year has 190 days.
That leaves 175 days to spend on family time, shopping, celebrations, visits, holidays, and other appointments.

0 days absence	8 days absence	10 days absence	19 days absence	29 days absence	38 days absence
190 days of education	182 days of education	180 days of education	171 days of education	161 days of education	152 days of education
100% attendance	96% attendance	95% attendance	90% attendance	85% attendance	80% attendance
Excellent	Very Good	Worrying		Serious concern	
Best chances of success.		Reduced chance of success.		Serious impact on education.	



SEND Support




What do we mean by SEND?

- SEND stands for Special Educational Needs and/or Disabilities.
- A child has SEND if they have a learning difficulty or disability that calls for special educational provision to be made for them.

What should I do if I think my child has special educational needs and/ or a disability?

- The first person to speak to is your child's class teacher. They will be able to discuss support for your child and to signpost you to any helpful resources. You can also find information about SEND at our school in our SEND Information Report on our school website.

Support from the SENDCo

- If your child's class teacher thinks that it would be helpful to get specialist advice, they will discuss your child's needs with the SENDCo.
 - The Interim SENDCo is Jen Gregson, standing in for Mrs Hannah Paradis during her maternity leave. Miss Gregson can be contacted via the SEND email address: sendco@bassingbourn.cambs.sch.uk.
- 

Contact

- You can make an appointment to see us through the Office.
- You can email us, but please do not email with something that needs attention **on that day – we do not check our emails during school hours.** You can find class email addresses on the website. If you receive no response after 48 hours, please contact the office.
- 6Wd@bassingbourn.cambs.sch.uk
- 6We@bassingbourn.cambs.sch.uk



Questions



We would really welcome parent helpers in school. If you would like to volunteer, please talk to the Office.



Bassingbourn
Community Primary School